

ALOHA 150



CAPTIVATING VILLA SET IN THE HEART OF THE GOLF VALLEY

This captivating villa impresses with its unique architectural design, featuring a dome-like structure at the heart of its exterior facade. Its white walls and traditional Andalusian roof tiles add a touch of classic charm.

Beds: 5 | **Baths:** 5+1 | **Plot:** 1.049m² | **Built:** 401m² | **Terraces & Porches:** 171m² | **Parking:** 4 cars | **Orientation:** W



The property offers an array of outdoor terraces, perfect for alfresco dining, BBQs and relaxed chill-out areas, allowing residents to enjoy Marbella's pleasant weather throughout the year.

Surrounded by lush greenery, the villa ensures utmost privacy from neighbouring properties. The pool's distinctive shape, connected to a jacuzzi, adds visual appeal. The circular theme continues throughout the property, seen in the ground floor's arched windows that connect the living area to the terrace.









The fully equipped kitchen showcases immaculate carpentry that blends beautifully with the selection of marble and a stunning central kitchen island. With direct terrace access and the outdoor BBQ and alfresco dining area just steps away, you can delight in cooking while hosting friends and family in a charming outdoor setting.





The circular theme continues throughout the property, seen in the ground floor's arched windows that connect the living area to the terrace. Inside, the interiors exude elegance with refined decorations and attention to detail. The open-plan layout facilitates a seamless flow between interior spaces, while ample windows fill the property with natural light.







The informal living room features a long sofa that mimics the dome's curved shape, creating an ideal space for family gatherings. Luscious wood flooring and arches add character while complementing the property's curvature theme. The windows flood the space with ample natural light, creating an airy and luminous ambiance.



Each of the 5 bedrooms is meticulously designed to prioritise luxury and comfort. The master bedroom is an epitome of elegance, with a luxurious bed and direct access to a private terrace. The master bathroom boasts a stunning double vanity, walk-in shower and bathtub adorned with the same exquisite marble featured in the kitchen.







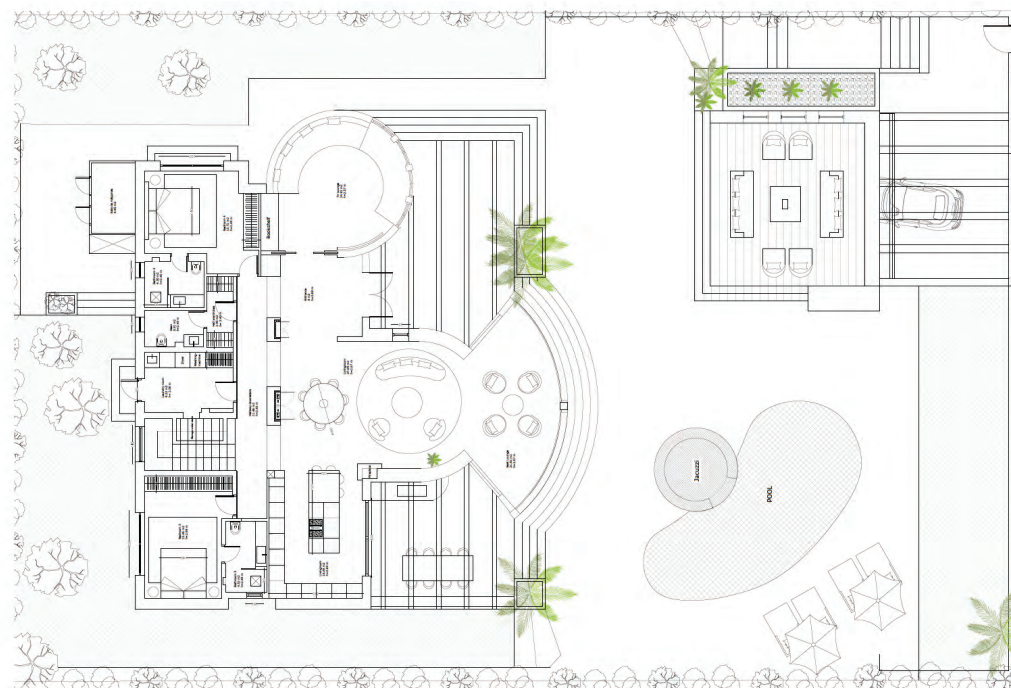




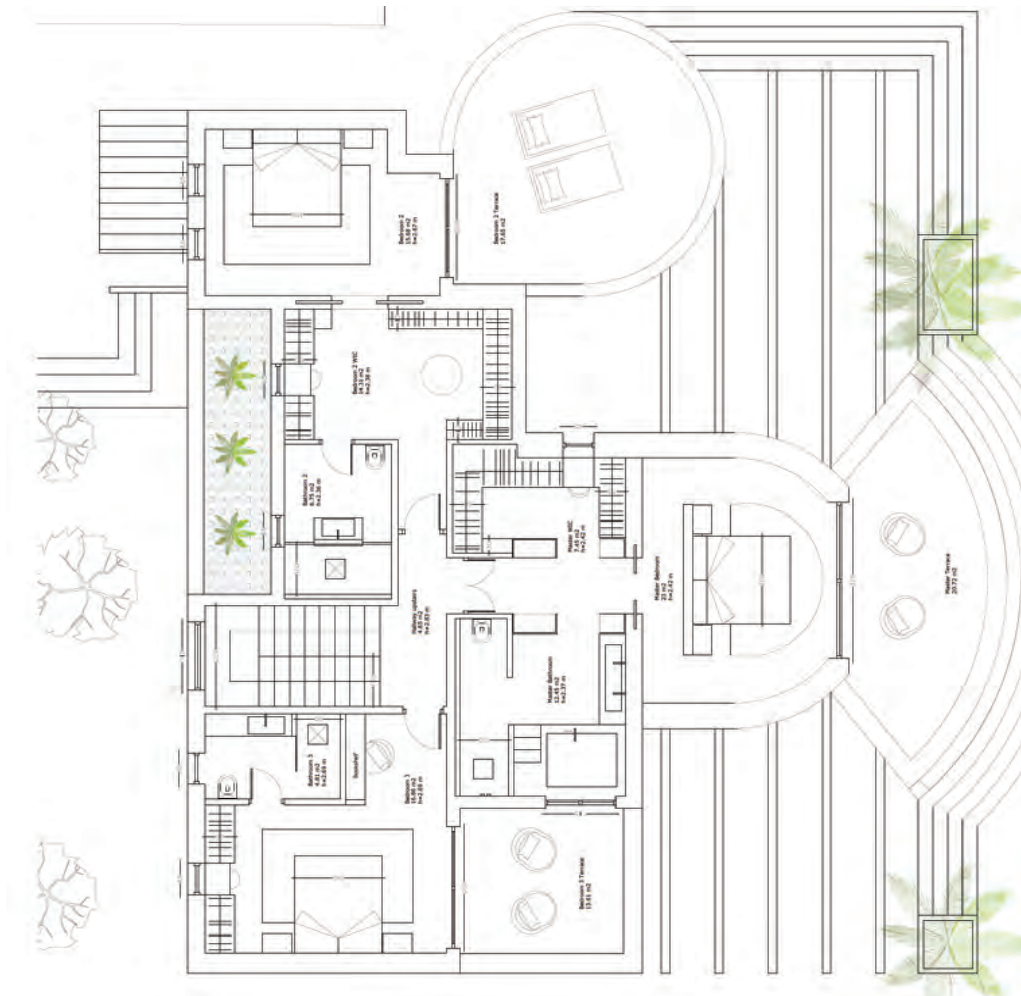


Situated on an ample plot in the sought-after area of Aloha, the villa offers breathtaking views of La Concha mountain and convenient access to a wealth of amenities within Nueva Andalucia's Golf Valley. Surrounded by internationally acclaimed golf courses and offering convenient access to Marbella and its surroundings, this exquisite villa provides everything you need just moments away.

GROUND LEVEL



FIRST LEVEL



Beds: 5 | **Baths: 5+1** | **Plot: 1.049m²** | **Built: 401m²** | **Terraces & Porches: 171m²** | **Parking: 4 cars** | **Orientation: W**



ALOHA 150